

EXPEDITION ...

Navigating Quality





Welcome to the expedition

HIGHLIGHTS

EXCEPTIONAL EDUCATION

Earn up to 19 CEUs approved by:

- NAB - National Association of Long Term Care Administrator Boards
- NCIA - Arizona Board of Nursing Care Institution Administrators and Assisted Living Facility Managers
- APNCC - Activity Professionals National Credentialing Center

SEPARATE TICKET EVENTS

Celebrating Excellence: Awards Breakfast Gala, Tuesday, June 17, 7:30 - 9:00 am.

OPENING GENERAL SESSION

The convention will start on Monday at 8:30 am with an opening address by Mark Parkinson, Principal at the American Health Care Association.

EXPO

Visit over 120 business partners who provide cutting edge products and services in long term care.

SILENT AUCTION AND 50/50 RAFFLE

Support the Arizona Health Care Foundation by purchasing 50/50 raffle tickets and items from the exciting silent auction.

EVENING EVENTS

- Hospitality Hike
- Chef's Challenge

REGISTRATION

EXPEDITION ...

Navigating Quality



REGISTRATION

- Full convention rate includes admission to the education sessions and expo from June 16-18.
- One-day rate includes admission to the education sessions and expo on Tuesday, June 17 only.
- Attend Awards Breakfast on Tuesday, June 17, for an added fee.

ATTENDEE POLICY

Businesses or vendors who are not exhibitors, presenters, AHCA Board members, AHCA staff consultants, sponsors and/or licensed Nursing Home Administrators, Assisted Living Managers, or other staff of skilled nursing facilities or assisted living communities, may not attend the AHCA Convention & Expo.

PHOTOGRAPH POLICY

By registering for this event, you give permission to AHCA, or parties acting on behalf of AHCA, to take your photo, video, or other media and acknowledge that these photos, videos, or other media may be used by AHCA for any purpose related to its mission including educational and promotional uses.

CANCELLATION/REFUND POLICY

If it is necessary to cancel your convention registration, you must send an email request to Frank Caruso at fcaruso@azhca.org. Phone cancellations will not be accepted. Cancellations on or before June 1 will entitle you to a full refund minus a \$100.00 administrative fee. No refunds will be given for cancellations received after this date.

NO-SHOW POLICY

Refunds will not be issued to participants who do not attend the convention, do not send a substitute, or do not cancel their registration by June 1 as stated above. Survey Policy: if you are notified of an ADHS survey in your facility the week of or during the convention, you will receive a full refund. Please notify AHCA as soon as possible if this occurs.

SPEAKERS

EXPEDITION ...

Navigating Quality

MONDAY | GENERAL SESSION

ALYSON VAN HOOSER, Author President & CEO, Van Hooser Associates, Inc.

Alyson is on a sold-out mission to help leaders succeed in the complex, modern workforce! As President & CEO of Van Hooser Associates, Inc., and a trusted authority on effective leadership, Alyson draws from a wealth of experience—managing teams at Walmart, leading in the financial industry, serving as an elected city council member at just 26, and working extensively in leadership training and executive coaching across industries. Tough beginnings taught Alyson the radical power of an ownership mindset—one that transforms the trajectory of your life and helps you achieve audacious goals in business. Alyson's work reveals future-proof, practical, immediately actionable, strategies for captivating, connecting, and compelling people to move forward with you, whether it be customers or team members! Her results-obsessed inspiration guides people at all stages of their careers to make practical changes that drive real-life changing results!

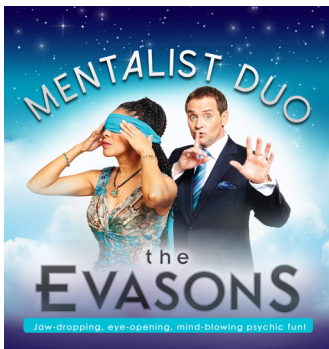


TUESDAY | GENERAL SESSION

BEN SAUNDERS, Record-breaking polar explorer, climate technology investor and inspirational speaker

Ben Saunders has covered more than 4,500 miles (7,242km) on foot in the polar regions. His accomplishments include leading The Scott Expedition, the longest human-powered polar journey in history, and the first completion of the expedition that defeated Captain Scott and Sir Ernest Shackleton, a 108-day round-trip from Ross Island on the coast of Antarctica to the South Pole and back again. Ben is the third person in history to ski solo to the North and South poles. He holds the records for the longest solo Arctic journey by a Briton, and for the longest ever polar journey on foot. He is the author of Shackleton (A Ladybird Expert Book), a contributor to What Doesn't Kill You: Fifteen Stories of Survival, and he is featured in ReWork by David Heinemeier Hansson and Jason Fried, The Rise by Sarah Lewis, Reboot: Leadership and the Art of Growing Up by Jerry Colonna, Purposeful Curiosity by Dr. Costas Andriopoulos, and TED Talks: The Official TED Guide to Public Speaking by Chris Anderson.





TUESDAY | GENERAL SESSION

THE EVASONS, Mentalist Duo | Telepathists

The Evasons are one of very few couples in history who have mastered this rare and staggeringly difficult art of two person mentalism. For over 30 years they have been traveling around the globe, sharing their exclusive brand of mentalism. From the moment they walk on stage, The Evasons interact and engage with everyone in the audience. Their intuitive gifts will captivate your imagination and tickle your sense of wonder!

WEDNESDAY | GENERAL SESSION

BRIAN FENNESSY, Fire Chief, Orange County Fire Authority

As the Fire Chief of the Orange County Fire Authority (OCFA), Brian Fennessy leads more than 1,800 firefighters and non-sworn personnel who serve 2 million residents across 23 cities and unincorporated county. He began his career in 1978 with the USFS and BLM working as a hotshot crewmember. In 1990, Fennessy joined the San Diego Fire-Rescue Department and became Chief in 2015. In 2018, he was appointed to Fire Chief of the OCFA. Chief Fennessy currently serves as Chair of the FIRESCOPE Board of Directors; is a member of the Western Fire Chiefs Association Wildland Fire Policy Committee; represents the nine West Division FEMA Urban Search & Rescue Task Forces; and President of the California Fire Chiefs Association. In 2022, he was recognized as CalChiefs Fire Chief of the Year and in 2023, the International Association of Fire Chief's Career Fire Chief of the Year.

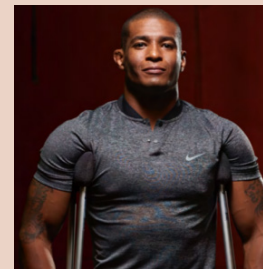
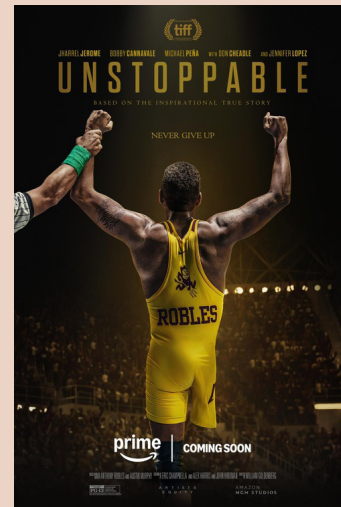


MONDAY | GENERAL SESSION

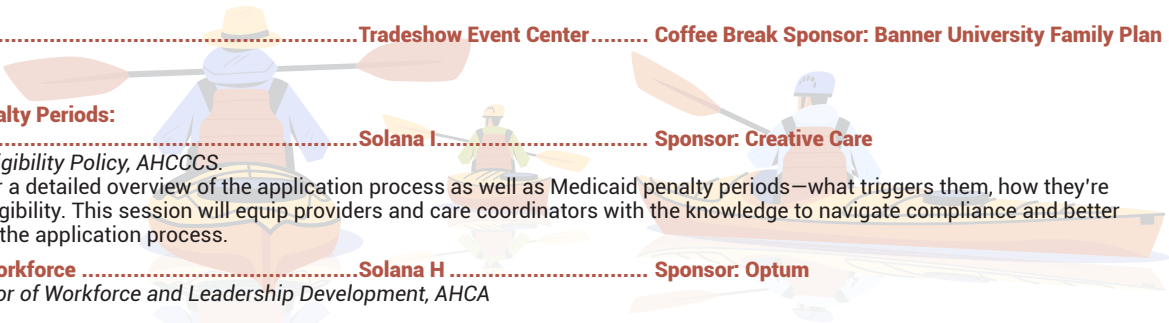
ANTHONY ROBLES All-American Wrestling Champion and ESPN Wrestling Expert

Anthony Robles was born without a right leg, yet he never let his disability stop him from achieving his dreams.

With unrelenting determination — and the belief that he could do anything — he defied all odds and became a champion collegiate wrestler, competing against able-bodied athletes. Anthony inspires others to believe that they too can overcome the odds. In this moving, awe-inspiring presentation, Anthony shares his extraordinary life story—now chronicled on the big screen in a major motion picture starring Jennifer Lopez and Jharrel Jerome — and illustrates how perseverance, hard work, and a strong belief in yourself can not only lead you to success, but make you unstoppable.



8:30 am – 9:15 am	AHCA Welcome and National Update Solana E Sponsor: PharmcareUSA <ul style="list-style-type: none">• <i>Mark Parkinson, Principal, American Health Care Association</i> Join Mark Parkinson, former CEO of the American Health Care Association, as he kicks off the convention with a national update on key policy developments, industry trends, and the future of long term care. This session offers valuable insights straight from the top, setting the stage for a forward looking and impactful event.
9:15 am – 10:15 am	Infinite Influence Solana E Sponsor: Bandera <ul style="list-style-type: none">• <i>Alyson Van Hooser, Author President & CEO, Van Hooser Associates, Inc.</i> Discover how to build lasting connections and drive meaningful impact in today's multi-generational workforce with Alyson Van Hooser, acclaimed author and CEO of Van Hooser Associates. In this high-energy session, Alyson shares practical strategies for expanding your influence, improving communication, and leading with purpose.
10:15 am – 11:15 am	Begin your Expo Expedition Tradeshow Event Center Coffee Break Sponsor: Banner University Family Plan
11:15 am – 12:30 pm	Breakout Session Understanding ALTCS Applications and Penalty Periods: Timing, Impact, and Compliance Solana I Sponsor: Creative Care <ul style="list-style-type: none">• <i>Tara Cochran, Policy Manager, Office of Eligibility Policy, AHCCCS.</i> Join AHCCCS ALTCS representatives for a detailed overview of the application process as well as Medicaid penalty periods—what triggers them, how they're calculated, and their implications for eligibility. This session will equip providers and care coordinators with the knowledge to navigate compliance and better support residents and families through the application process. A Journey of Building a Trauma Informed Workforce Solana H Sponsor: Optum <ul style="list-style-type: none">• <i>Jeffreys B. Barrett, MHA, NHA, QCP, Director of Workforce and Leadership Development, AHCA</i>• <i>Kristin Ott, BSA, NHA, CEO, Creative Care</i>• <i>Jean M. Hartnett, MHSA, NHA, CDP, YTT, CNA, Founder, Radical Sabbatical</i> Explore the journey of building a trauma informed workforce, where staff are uniquely impacted by the emotional demands of caregiving. This session will highlight KARE's three-part, peer reviewed, "Trauma and Resilience" study and review practical strategies and leadership approaches that foster resilience, support staff well-being, and create a safer, more compassionate environment for both long term care professionals and the residents they serve. The national stage is being set here in Arizona, at one of our own skilled nursing facilities, to determine how to operationalize the adoption of trauma-informed principles in the workforce to lead to lasting cultural change and improved outcomes. Anatomy of a High Exposure Jury Trial Solana G Sponsor: Sunland Risk Retention Group <ul style="list-style-type: none">• <i>Paul Sheston, J.D., MBA, Founder and Lead Trial Attorney, Sheston Law Group, PLLC</i> Pull back the curtain and get a behind the scenes look inside a real-life high-exposure jury trial against a skilled nursing facility. You will hear actual testimony from the facility witnesses, experts, and family members. You will see the evidence for yourself. You will hear the closing arguments from the trial attorneys. Experience the crushing pressure, anxiety, stress and anticipation of the jury deliberations. This is a rare opportunity to get an insider perspective from those who sat in the defendant's chair during the trial and to do a deep-dive into the lessons learned and how to take immediate steps to improve your facility procedures to protect your organization from a potentially financially catastrophic jury verdict.



Strengthening the Continuum of Care in Assisted Living CommunitiesCira C..... Sponsor: Omnicare a/ CVS Pharmacy

- Amy Malkin, Assisted Living Manager, Arroyo Gardens Independent and Assisted Living
- Katherine Perkins, Executive Director, Agape Hospice

In senior living, exceptional resident care thrives through strong partnerships with hospice and home health providers. In this session explore best practices that include regular team meetings, personalized care plans, and family engagement to build a supportive network. With compassion and collaboration, we can create an environment where residents feel valued—turning challenges into opportunities for joy and connection.!

The Connected Care Continuum: How Technology is Shaping Senior LivingCira B..... Sponsor: Saliba's Extended Care Pharmacy, a Guardian Pharmacy

- Jaxon Carson, Vice President of Partnerships, Veras
- Chris Blomquist, VP of AI Strategy IT/ Security Concerns for AI, DOVAXIX
- Yancey Mcmanus, Senior Director Solution Management, WellSky
- Abbie Richie, Tech Guru, The Smarter Service

Explore how emerging technologies are transforming the senior living landscape in this engaging panel discussion. Facilitated by a seasoned tech expert specializing in aging services, this session will highlight innovative tools and digital solutions that enhance care coordination, resident engagement, and operational efficiency across the continuum of care.

12:30 pm – 2:00 pm

Expedition Time and Lunch in the Expo

.....Tradeshow Event Center..... Sponsor: View Point Senior Care & Mercy Care

2:00 pm – 3:00 pm

Breakout Sessions

Maintaining Brain HealthSolana I..... Sponsor: Patient Transport

- Calli Carlson, OTR/L, CLT, Occupational Therapist | Dementia Care and Education Campus

Join occupational therapist, Calli Carlson, for practical strategies to improve cognitive function and long term brain wellness. Learn up-to-date information about best practices to foster a healthy mind and a healthy life for your team members. Become invested in strategies to improve your brain health.

DAP Me UP: Addressing Antipsychotics and the Differential

Adjusted Payment Incentive.....Solana H Sponsor: Wellness Labs

- Emily Tyler, DNP, ACNP, AP-PMN, Clinical Director, Pain and Palliative Associates
- Quentin Shambley, MSN, RN, PMHNP-BC, Peace of Mind Consultants, PLLC

Inappropriate antipsychotic prescriptions pose one of the highest risks to the skilled nursing patient population. To promote psychotropic stewardship, AHCCCS is providing a Differential Adjusted Payment ("DAP") incentive to facilities limiting their use.

Though protocols reducing inappropriate antipsychotic prescriptions are warranted, the inherent risks of re-emerging behaviors, adverse events, and reportable aggressive episodes create a complex and intimidating outlook. The presenters of "DAP Me Up" will showcase a multi-disciplinary approach towards effectively deprescribing inappropriate antipsychotics while demonstrating supportive patient-centered care.

EXPEDITION ...

Navigating Quality



Built to Respond: Emergency Readiness for Health Care Facility OperatorsSolana G Sponsor: Gallagher Insurance

- Jason D. Bishop, Director of Facilities, Friendship Village of Tempe
 - Stan Szpytek, Life Safety and Disaster Ready Consultant, AHCA
- This session will help health care leaders, facility operators and frontline staff plan and prepare for emergencies. Attendees will learn simple, practical ways to improve safety, manage risks, and keep facility operations running smoothly during a crisis. This session will focus on strong leadership, hands-on facility operations, and clear planning that is adaptable to the health care setting. Participants will also learn useful tips for staying compliant with CMS regulations, keeping business operations secure, and making sure facilities are ready for any emergency.

Medical Director Strategies to Improve Care and Outcomes in the Post Acute Care Setting TodayCira C..... Sponsor: Phoenix Vascular Access

- Lisa Evans, Corporate Director of Performance Improvement, Team Health
 - Dr. Tiffany Hanf, Regional Medical Director, Team Health
- This session will explore best practices in partnership with your Medical Director. The role of the Medical Director has evolved significantly over the years, reflecting changes in health care delivery, regulations, and an increasing focus on quality outcomes. Traditionally, a Medical Director's responsibilities were largely clinical, overseeing patient care standards and ensuring regulatory compliance. Today, however, their role is much broader, requiring a deeper collaboration with facility leadership to drive quality improvement initiatives, including Quality Assurance and Performance Improvement (QAPI).

Enhancing Care Through Medication Management: Insights from "Best Practices for Medication Management in Assisted Living: Pharmacy and Community Practices" Cira B..... Sponsor: Health Essentials

- Burton Korner, PhDc, DNP, MSN, RN-BC, CPHQ, CADDCT, CEO, Korman Healthcare
- This session will explore strategies to improve medication safety and efficiency in assisted living settings. There will be a discussion on the Best Practices for Medication Management in Assisted Living; Pharmacy and Community Practices, recently published in Caring for the Ages.

3:00 pm – 4:00 pm Be Unstoppable: Wrestling with Life's Challenges On and Off the MatSolana E..... Sponsors: WJ Wealth Management & UnitedHealthcare Community Plan

- Anthony Robles, All-American Wrestling Champion, ESPN Wrestling Expert and featured in the movie "Unstoppable"
- Anthony Robles was born without a right leg, yet he never let his disability stop him from achieving his dreams. With unrelenting determination—and the belief that he could do anything—he defied all odds and became a champion collegiate wrestler, competing against able-bodied athletes. An NCAA Division I Champion, three-time All-American, and a recipient of the ESPY Jimmy V Award for Perseverance, Anthony inspires others to believe that they too can overcome the odds. In this moving, awe-inspiring presentation, Anthony shares his extraordinary life story—now chronicled on the big screen in a major motion picture starring Jennifer Lopez and Jharrel Jerome—and illustrates how perseverance, hard work, and a strong belief in yourself can not only lead you to success, but make you unstoppable.

4:15 pm – 6:15 pm Hospitality Hike

Start your convention with a Hospitality Hike—basically a snack-fueled stroll with new friends all in the same hotel! Think of it as networking in sneakers: wander through a curated path of hospitality suites where the drinks are cold, the snacks are suspiciously fancy, and the small talk is surprisingly enjoyable. It's like a pub crawl, but with better lighting and fewer bad decisions. Plus, you might be able to hang with Sasquatch.

7:30 am – 9:00 am	Celebrating Excellence: Awards Breakfast Gala (Ticketed Event) Solana E Sponsors: Medline Industries & Target1Medical Join us for a morning committed to celebrating the dedication and excellence of long term care professionals. Our awards breakfast honors their outstanding contributions, showcasing their commitment to compassionate care and innovation within long term care. Let's come together to celebrate their achievements!
9:00 am – 10:00 am	Embracing Disruption: Navigating Personal and Professional Change Solana E Sponsor: Haven Health Management <ul style="list-style-type: none"> • <i>Ben Saunders, Record-breaking polar explorer, climate technology investor and acclaimed inspirational speaker</i> Join record-breaking polar explorer and renowned speaker Ben Saunders as he shares powerful lessons on resilience, adaptability, and leading through change. Drawing from extreme expeditions and his journey into climate technology, Ben offers inspiring insights for embracing disruption and thriving in uncertain times.
10:00 am – 11:00 am	Exhibitor Hours Tradeshow Event Center Coffee Break Sponsors: Grand Canyon University & Life Care Centers of America
11:00 am – 12:30 pm	Breakout Sessions How to Run a Successful Respiratory Therapy Program Solana I Sponsor: Plaza Healthcare <ul style="list-style-type: none"> • <i>Tracey Schartz M.Ed., RRT, VA-BC, Director of Respiratory Therapy, Plaza Healthcare</i> Gain practical insights and proven strategies for developing and sustaining a high-performing respiratory therapy program in long term care settings. This session will cover key elements such as staffing, equipment, clinical protocols, and interdisciplinary collaboration to ensure quality outcomes and regulatory compliance. Understanding the New Memory Care Rules Solana H Sponsor: Behavioral Health Solutions <ul style="list-style-type: none"> • <i>Kay Huff, RN, BSN, Director of Quality and Regulatory Services, AHCA</i> • <i>Jeffreys B. Barrett, MHA, NHA, QCP, Director of Workforce and Leadership Development, AHCA</i> • <i>Brandon Chuman, Psy.D., Chief of Neuropsychology, Behavioral Health Solutions</i> In this session, AHCA's Kay Huff, RN, BSN, will review the newest information on the memory care rules, licensure and educational requirements. Then hear from the Behavioral Health Solutions (BHS) leadership on their new memory care training learning management system and how to stay in compliance. Pre-Admission Risk Assessment – Managing your Risk of Non-Payment while Prudently Increasing Your Census Solana G Sponsor: OPCO Skilled Management <ul style="list-style-type: none"> • <i>Jill Pulliam, Owner and CEO, Benefit Results</i> Being proactive upon admission regarding issues that may cause revenue loss while providing specific management of the ALTCS process is a cost effective and prudent effort that will positively impact your facilities bottom line. We will discuss proven techniques to utilize a pre-admission screening process, along with proactive ALTCS management to reduce unnecessary revenue loss and bad debt. Plating the Perfect Dish – The Ingredients to a Better Menu Cira C Sponsor: Shamrock Foods <ul style="list-style-type: none"> • <i>Amanda Baron, RD, CDM, CFPP, Senior Menu Specialist- Nutrition Services Team, Shamrock Foods Company</i> Discover the essential ingredients that go into crafting a well-balanced, resident-centered menu in long-term care settings. This session will explore how thoughtful menu planning, nutritional value, and resident preferences come together to create satisfying and compliant meals.. Factors Affecting Wound Healing Cira B Sponsor: Medline Industries <ul style="list-style-type: none"> • <i>Melissa Morgan, MSN, RN, CWCN, Clinical Solutions Manager, Medline</i> Wound healing is complex, influenced by various internal and external risk factors. This session explores key factors affecting healing, phases of the process, and how to recognize and respond to infections to support better outcomes.

12:30 pm – 2:00 pm **Lunch in the Expo & Close of Expo** **Tradeshow Event Center** **Sponsors: Belfor Property Restoration & PACS**

2:00 pm – 3:00 pm **Breakout Sessions**

Understanding the IDR & IIDR Process **Solana I** **Sponsor: Covenant Health Network**

- *Kay Huff, RN, BSN, Director of Quality and Regulatory Services, AHCA*
Navigate the Informal Dispute Resolution (IDR) and Independent Informal Dispute Resolution (IIDR) processes with confidence in this informative session. Attendees will gain a clear understanding of when and how to initiate these processes, what documentation is essential, and strategies for presenting a strong case to challenge survey findings effectively.

Neuman's System Model for Assessment and Care Planning **Solana H** **Sponsor: McKesson Medical**

- *Burton Korer, PhD, DNP, MSN, RN-BC, CPHQ, CADDCT, CEO, Korman Healthcare*
This presentation explores Neuman's Systems Model as a holistic framework for assessment and care planning in assisted living. Emphasizing the interplay of client stressors, environmental factors, and wellness levels, the model guides caregivers in identifying risks, strengths, and interventions to promote stability and optimal health outcomes for residents. An effective model must consider the complex environment of health care systems, individual organizations, and residents with multiple chronic illnesses.

Caring for a Unique Population: Panel Discussion **Solana G** **Sponsor: Bandera Healthcare**

- *Moderator: Troy Sessions, Citrus Heights Specializing in Airways, SMI Behavioral, GCI Behavioral, Bed Side Dialysis*
- *Aaron Kuck, Montecito, Specializing in Airways, SMI Behavioral, Bed Side Dialysis*
- *Morgan Cooper, Osborn Health and Rehabilitation, Bariatric and Super bariatric (More than 600lbs)*
- *Conner Monks, Chandler Post Acute and Rehabilitation; High Acuity Behavior*
- *Jaron Watson, Villa Maria Health & Recovery; Drug Rehabilitation/Recovery*
- *Megan Majors, Rio Vista, Inpatient Behavioral for Autistic Adolescents with Behaviors*
Join this dynamic panel of operational leaders as they explore innovative approaches to caring for individuals with highly specialized needs, from airway and behavioral health to bariatric care and adolescent autism. Moderated by Troy Sessions, the discussion will highlight real-world strategies, challenges, and successes in delivering exceptional care to these complex populations.

Interdisciplinary Fall Prevention Across the Continuum of Care **Cira C** **Sponsor: Intelligrated Communications**

- *Brett Vetterkind, PT, DPT, Regional Director of Operations, Reliant Rehabilitation*
This presentation explores the far-reaching impact of falls on resident quality of life, facility outcomes, and the national health care system. It will also highlight the critical role of discipline-specific therapy practitioners and the key elements of an effective, collaborative fall prevention program through interdisciplinary teamwork.

Legal Pulse: Key Long Term Care Updates You Need to Know **Cira B** **Sponsor: Immanuel Campus of Care**

- *John Checkett, J.D, Partner, The Checkett Law Firm*
Stay ahead of the curve with the latest legal developments impacting long term care providers. This session will cover recent regulatory changes, litigation trends, and challenges, equipping attendees with the knowledge to mitigate risk, protect their organizations, and ensure ongoing legal readiness in an evolving landscape.

3:00 pm – 4:00 pm

The Evasons – Mentalist Duo

.....Solana E.....

Sponsor: AZ Complete Health

From the moment they walk on stage, The Evasons interact and engage with everyone in the audience. People are amazed when they perceive birth dates, personal items carried in pockets, a serial number on any bill in a borrowed wallet or even the name of distant loved ones - all accomplished without having any prior knowledge. Their intuitive gifts will captivate your imagination and tickle your sense of wonder!

4:00 pm – 6:00 pm

AHCA Long Term Care Chef's Challenge

.....Aurora.....

Sponsor: Shamrock Foods

WEDNESDAY, JUNE 18, 2025

8:00 am – 9:00 am

Membership Meeting and Board Elections

.....Solana E

9:00 am – 10:00 am

Partnering for Better Outcomes: A Panel with Arizona's ALTCS Plan Leaders

.....Solana E.....

Sponsor: Incite Strategic Partners

- *Facilitated by: David Voepel, CEO, Arizona Health Care Association*
- *Lisa L. Stutz, MHR, CPHQ, CLSSGB, Executive Director Arizona Long Term Care, Arizona Complete Health*
- *Ryan J. Thomsen, Medicaid Program Administrator, Banner Plans & Networks*
- *Cindy Leach, Vice President, Long Term Care, Mercy Care*
- *Francine Pechnik, Executive Director Long Term Care, UnitedHealthcare Community Plan*

Join representatives from Arizona's ALTCS (Arizona Long Term Care System) managed care plans for an interactive panel discussion on collaboration, innovation, and the future of long term care in the state of Arizona. Panelists will share insights on current priorities, provider partnerships, and strategies to improve care coordination and member outcomes across the continuum.

10:00 am – 10:10 am

Foundation 50/50 Drawing

10:15 am – 11:15 am

Becoming a Five S.T.A.R. Leader: Engaging with Purpose Leading with Impact

.....Solana E.....

Sponsor: Mercy Care

- *Jerald Cosey, BA, HFA, CNA, J. Cosey Speaks, Inc.*

Leadership in senior health care begins with purpose and drives transformation. In this dynamic session, Jerald Cosey introduces the Five S.T.A.R. Leadership framework—Strategically Transforming Actions to Achieve Results. Learn how reducing isolation, refining your skills, and reconnecting with your 'why' can shift culture and improve outcomes.

11:15 am – 12:15 pm

Leadership in Crisis: From the Frontline of the California Wildfires

.....Solana E.....

Sponsor: Fire and Life Safety

- *Brian Fennessy, Fire Chief, Orange County Fire Authority*

Join Fire Chief Brian Fennessy for an inspiring session on leadership during emergencies. With decades of experience in fire and emergency services, Chief Fennessy will share valuable lessons on crisis management, decision-making under pressure, and the critical role of collaboration between first responders and health care providers in ensuring community safety and resilience.

**Navigating Quality**

SPONSORS

TITLE SPONSORS



havenhealth

INCITE
STRATEGIC PARTNERS



PREMIER SPONSORS



olio

PACS

EXPEDITION ...

Navigating Quality

CHAMPION SPONSORS



Opco
ARIZONA



EXPEDITION ...

Navigating Quality

AMBASSADOR SPONSORS



EXHIBITORS

TITLE SPONSORS PREMIER SPONSORS

CHAMPION SPONSORS AMBASSADOR SPONSORS

AB Staffing Solutions
Academy On-Demand
Acadia Pharmaceuticals
Activity Professionals
Advanced Health Institute
Advanced Oxygen Therapy Inc.
ArchWell Health
Arizona Complete Health (Centene)
Arizona Medicare & Insurance
Solutions
Bandera / Ensign
Banner - University Family Care
Behavioral Health Solutions
Belfor Property Restoration
Benefit Results
Bryan University
Burns Pest Elimination
Canyon Home Care and Hospice
Carefeed
Central Clinical labs
Cintas
Comprehensive Mobile Care
Contexture
Convergent Technologies
Coronado Dental Service
Covenant Health Network
Covr
Curitec
Devoted Guardians Home Health
Dynasty Law

Emblem Healthcare
Enhance Therapies
Essity
Ferring Pharmaceuticals
Gallagher Insurance
Gentell
GeriPro Inc
Ghaster Painting & Coatings, Inc.
GOJO Industries
Grand Canyon University
Haven Health (Health Group Management)
Health Essentials
Health Management Associates
HealthLift Non-Emergency Transportation
Helpany Inc.
Heritage Lane Behavioral Assisted Living
Hospice of the Valley
HPSI Purchasing Services
Immanuel Campus of Care
Impact Architects
Impact Medical
Incite Strategic Partners
Infinity Medical Providers
Intelligrated Communications, Inc.
International Alliance Group
It's All About Satellites
Jackson White Attorneys at Law
KARE
Klein Heating and Cooling
Korman Healthcare
Life Care Centers of America

Lundbeck
MatrixCare
McKesson Medical Surgical
Medical Arts Long Term Care Pharmacy
Medline Industries
Mercycare
Midwestern University Graduate Nursing
NAI Horizon - Senior Living Group
Navigator Group Purchasing, LLC
Neurocrine Biosciences
Nursa
Olio
Omnicare
OPCO Skilled Management
Optum
Otsuka
Pacific Mobile Diagnostics AZ
PACS Senior Living
Pandion Optimization Alliance
Patient Transport
Peace of Mind Consultants
Pharmcare USA
PharMerica
Phlebotomists on Wheels Arizona
Phoenix Vascular Access
Pic Rite Management and Consulting
Plaza Healthcare
Post Acute Care, LLC
Preferred Podiatry Group
Premier | Innovatix
Quality Management Solutions

Quality Transport Services of Arizona
Red Rock Pharmacy
Reliant Rehab
RestorationHQ
Royal Hospice, Vital Palliative, ComForCare
Homecare
Safety Drugs
Saliba's Extended Care Pharmacy
SchedulePop
Sentience Psychological Services
Shamrock Foods
Smith+Nephew
SNF Wound Care
Sonora Quest Labs
Stillwater Hospice
Sunland Risk Retention Group
TapestryHealth
Target1Medical
TeamHealth PAC
Teva Pharmaceuticals, Inc.
The Marcann Group
The Wound Pros
TMC
UnitedHealthcare Community Plans
University of Arizona Center on Aging
USI Insurance
VIC the PICC
Vidafuel Wellness Protein
Wellness Labs
WellSky



REGISTRATION

REGISTER BY SCANNING THE QR CODE or online [HERE](#)

CONVENTION REGISTRATION FEES

FULL CONVENTION (Monday, Tuesday, Wednesday)	AHCA Member	Non-Member
Registrants 1 through 4	\$395/person	\$725/person
Registrants 5 through 9	\$295/person	\$555/person
Registrants 10 Plus	\$195/person	\$450/person
Tuesday Only (ONE DAY RATE)	\$295/person	\$405/person
ADDITIONAL EVENTS (Tuesday AM)	AHCA Member	Non-Member
Breakfast Award Ceremony	\$35/person \$200 table of 6 \$250 table of 8	

Fees are based on staff from one facility in one location. Full convention registration fees include lunch on Monday and Tuesday. Central office staff associated with a multi-facility sponsor or other agency may similarly register under the fees noted above.





2025 AHCA Convention & Expo

June 16-18 | Renaissance Phoenix Glendale Hotel & Conference Center

EXPEDITION ...

Navigating Quality



Arizona Health Care Association

3003 N. Central Ave, Suite 860
Phoenix, AZ 85012